



# Pollination Workshop

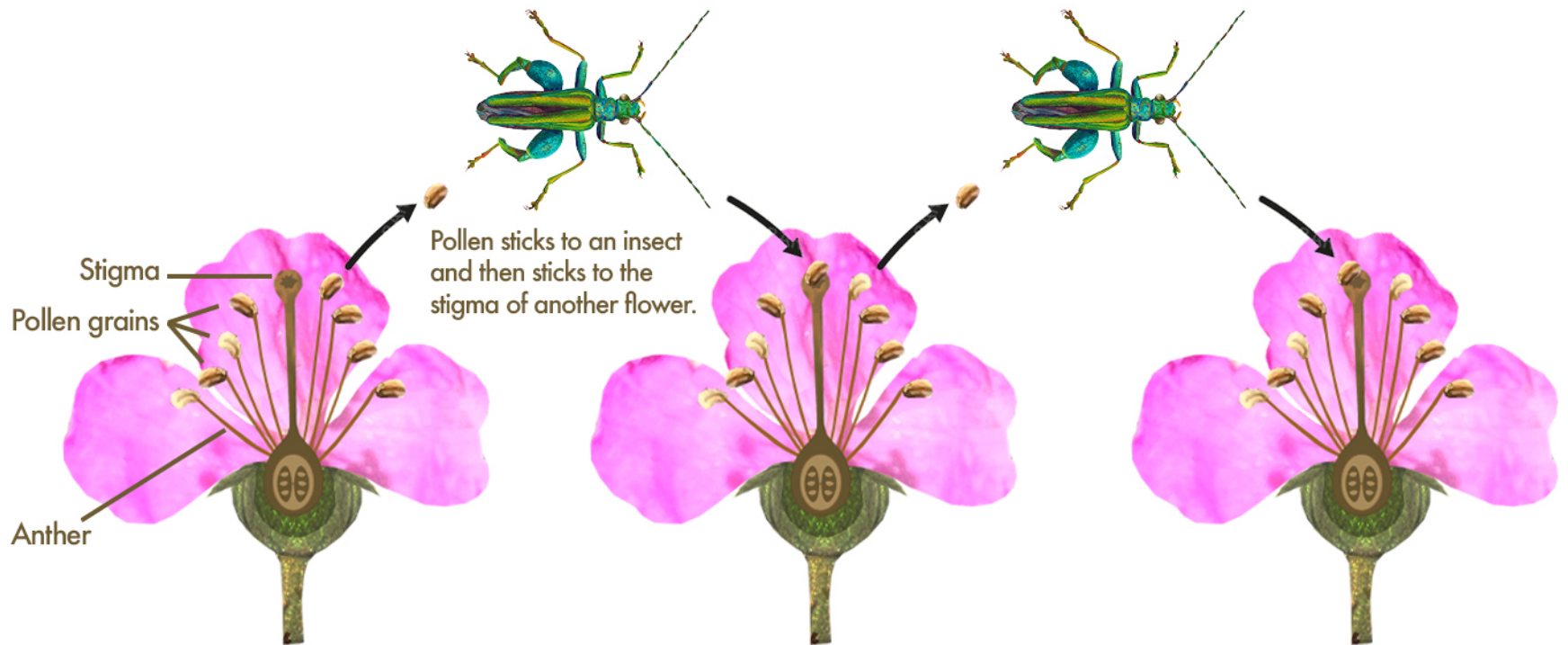


What is pollination?

Pollination is a process which allows flowering plants to reproduce and produce fertile seeds and fruit.

- Some plants use the wind to help pollinate their flowers.
- Other plants rely on pollinator insects to help them.

# Insects help to pollinate flowers



Pollination is how plants reproduce and without it they cannot produce fertile seeds or fruit.

During fertilization a pollen grain from the male anther of a flower must stick to the female stigma.

Many insects love to eat sweet nectar and pollen made by flowers.

Insects get a tasty meal and help to pollinate the flower in return.

As the insect feeds from the flower, pollen sticks to the insect's hairy body or legs and is transported to the next flower, where it sticks to the female stigma and fertilizes the plant.





See how the bumblebee is covered in pollen grains



Without insect pollinators  
we would struggle to  
grow many of our  
favourite fruit and  
vegetables.



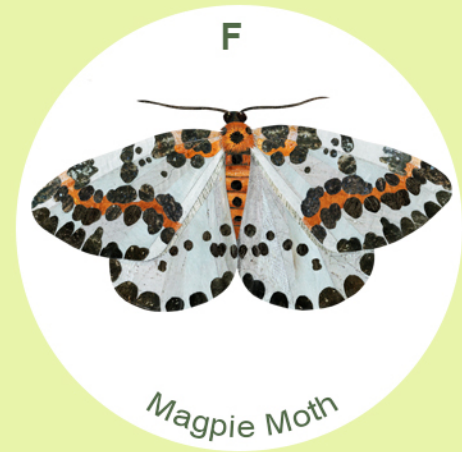
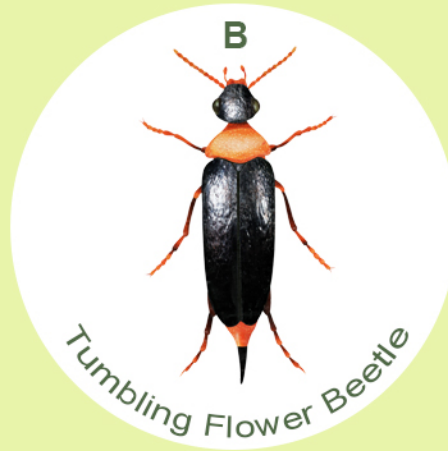




It's not just honeybees and butterflies that pollinate flowers



Can you guess which of these insects help to pollinate flowers?





# Many different insects help to pollinate flowers. Here are just some of them...



**Footballer Hoverfly**  
*Helophilus pendulus*  
wing span 25mm



**Gatekeeper Butterfly (female)**  
*Pyronia tithonus*  
wing span 40mm



**Rose Chafer Beetle**  
*Cetonia aurata*  
length 14-21mm



**Common Carder Bumblebee**  
*Bombus pascuorum*  
length 8-18mm



**Red Admiral Butterfly**  
*Vanessa atalanta*  
wing span 67-72mm



**Pollen Beetle**  
*Meligethes aeneus*  
length 2-3mm



**Ivy Bee**  
*Colletes hederiae*  
length 10-13mm



**Painted Lady Butterfly**  
*Vanessa cardui*  
wing span 51-73mm



**Holly Blue Butterfly (male)**  
*Polyommatus icarus*  
wing span 26-35mm



**Common Drone-fly**  
*Eristalis pertainax*  
wing length 10-12mm



**Meadow Brown Butterfly**  
*Maniola jurtina*  
wing span 50-55mm



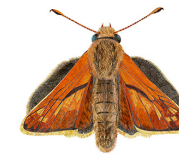
**Dotted Bee-fly**  
*Bombylius discolor*  
length 8-12mm



**Ashy Mining Bee**  
*Andrena cineraria*  
length 9-15mm



**Large White Butterfly (female)**  
*Pieris brassicae*  
wing span 63-70mm



**Large Skipper Butterfly**  
*Ochloides sylvanus*  
wing span 28-32mm



**Marmalade Hoverfly**  
*Euphydryas balteatus*  
wing length 6-10mm



**Thick-legged Flower Beetle**  
*Oedemera nobilis*  
length 6-11mm



**Orange-tip Butterfly (male)**  
*Anthocharis cardamines*  
wing span 40-50mm



**Red-tailed Bumblebee (male)**  
*Bombus lapidarius*  
length 13-15mm



**Herald Moth**  
*Scotiopteryx libatrix*  
wing span 40-45mm



**Batman Hoverfly**  
*Myathropa florea*  
length 7-12mm



**Small Tortoiseshell Butterfly**  
*Aglais urticae*  
wing span 50-56mm



**Black & Yellow Longhorn Beetle**  
*Rutpela maculata*  
length 13-20mm



**Marsh Fritillary Butterfly**  
*Euphydryas aurinia*  
wing span 30-42mm



**Honeybee (worker)**  
*Apis mellifera*  
length 12-14mm



**Small Skipper Butterfly**  
*Thymelicus abdonnais*  
wing span 27-34mm



**Small White Butterfly (female)**  
*Pieris rapae*  
wing span 40-45mm



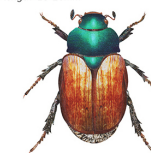
**Common Banded Hoverfly**  
*Symploca ribesii*  
length 8-13mm



**Marbled White Butterfly**  
*Glyptotendipes*  
wing span 46-56mm



**Tawny Mining Bee**  
*Andrena fava*  
length 9-15mm



**Garden Chafer Beetle**  
*Phyllaethra horticola*  
length 8-11mm



**6-Spot Burnet Moth**  
*Zygaena filipendulae*  
wing span 25-40mm



**Magpie Moth**  
*Abraxas grossulariana*  
wing span 35-40mm



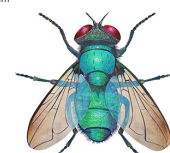
**Tumbling Flower Beetle**  
*Mordellidae*  
length 4-6mm



**Comma Butterfly**  
*Polygonia c-album*  
wing span 50-60mm



**Red Soldier Beetle**  
*Rhagonycha fulva*  
length 7-10mm



**Greenbottle**  
*Lucilia sp.*  
length 10-14mm



**Common Wasp (worker)**  
*Vespa vulgaris*  
length 10-13mm



**Red Ant**  
*Myrmica ruginodis*  
length 4-6mm



**Small Copper Butterfly**  
*Lycaena hippodamia*  
wing span 32-35mm



**Early Bumblebee (female)**  
*Bombus pratorum*  
length 8-17mm



**Peacock Butterfly**  
*Aglais io*  
wing span 50-56mm



**Dark-edged Bee-fly**  
*Bombylius major*  
length 10-18mm



**Buff-tailed Bumblebee (worker)**  
*Bombus terrestris*  
length 10-25mm



**Brimstone Butterfly**  
*Gongysteryx rhamni*  
wing span 55-60mm



**Tapered Hoverfly**  
*Eristalis pertainax*  
wing length 8-13mm



**Silver-washed Fritillary Butterfly**  
*Argynnis paphia*  
wing span 69-80mm



**Green Malachite Beetle**  
*Molophilus bipustulatus*  
length 5-6mm



**Ringlet Butterfly**  
*Aphantopus hyperantus*  
wing span 35-42mm





Rose Chafer Beetle





Thick-legged Flower Beetle





Common Red Soldier Beetle





Pollen Beetle





Marmalade Hoverfly





Green Bottle Fly





Common Wasp





6-spot Burnet Moth

It is really important that we nurture and protect all insect pollinators, as they are a vital part of human food production.





# Büzz & Scuttle



[buzzandscuttle.com](http://buzzandscuttle.com)