

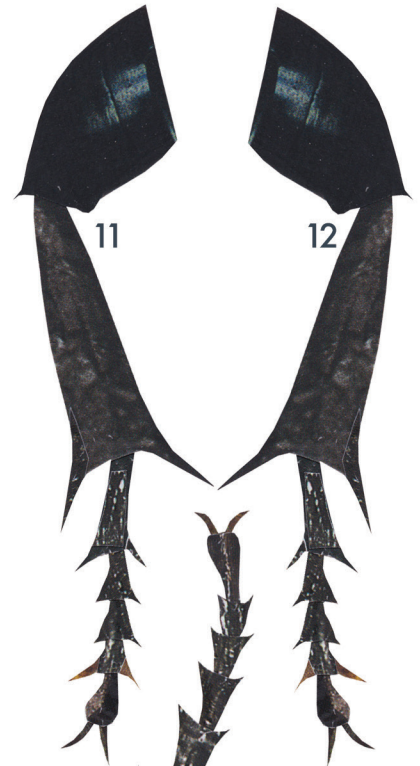
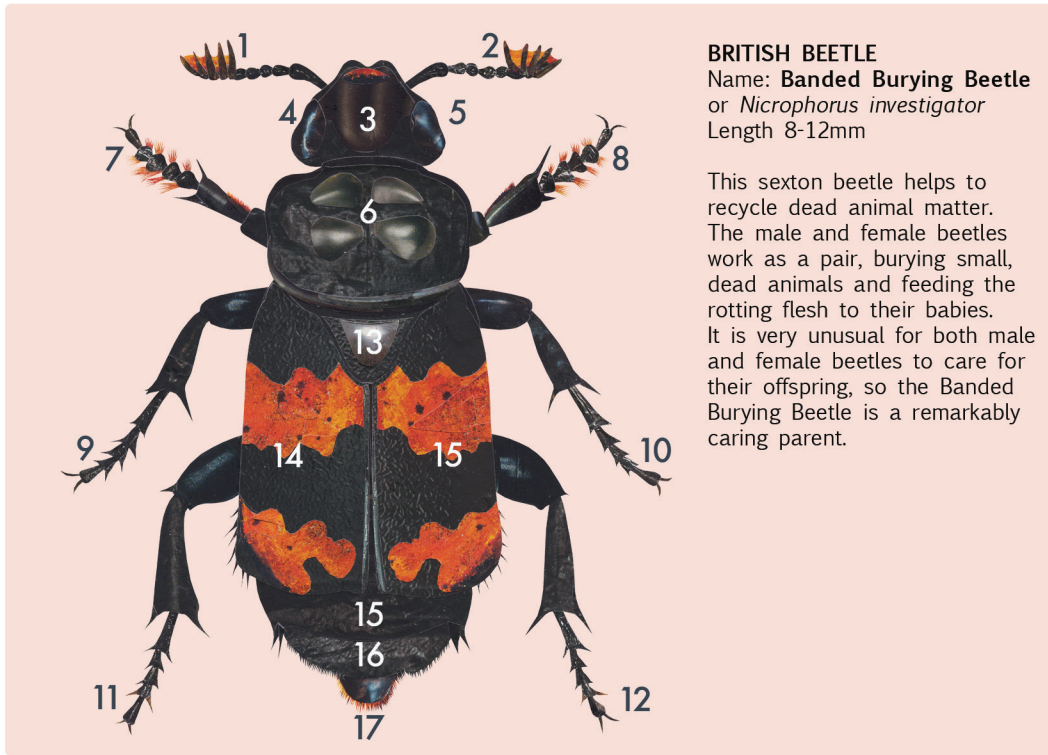
# Nature's Waste Disposal Experts Workshop

## Activity Sheets

### Create a collage of a Waste Disposal Expert

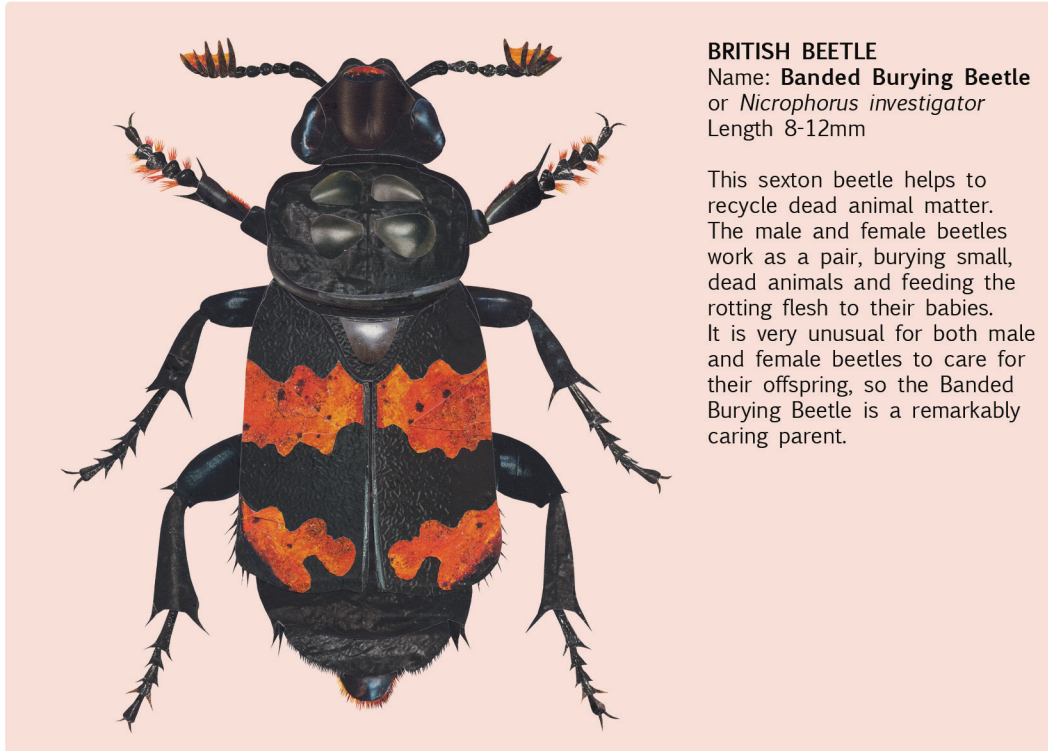
The insect illustrations featured on the Buzz and Scuttle website are created by illustrator Marian using collage; snipping colours and textures out of discarded magazines and then sticking them down with glue. In this printable PDF you will find collage materials which can be cut up to create invertebrate illustrations.

# Collage a Banded Burying Beetle



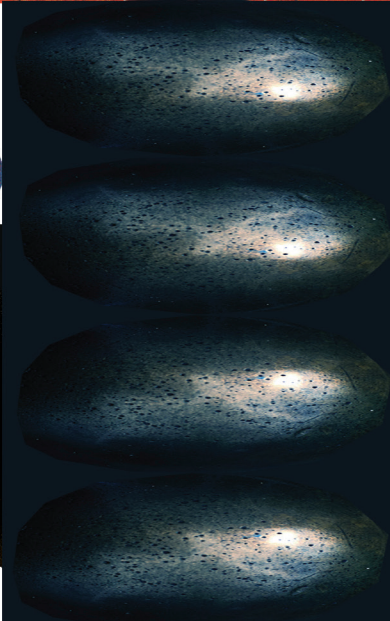
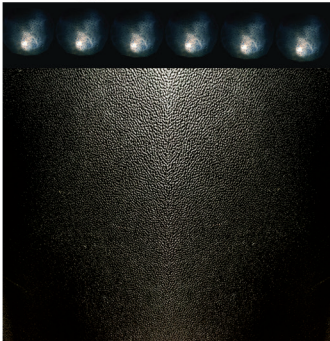
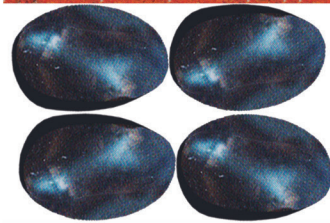
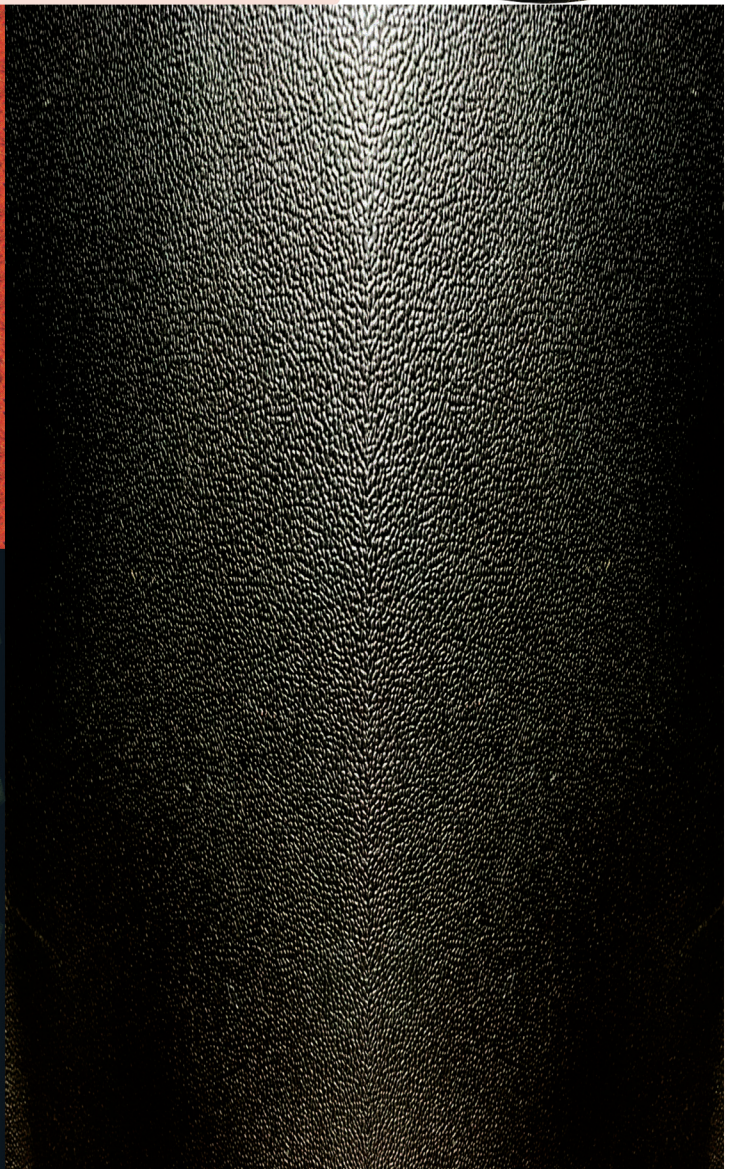
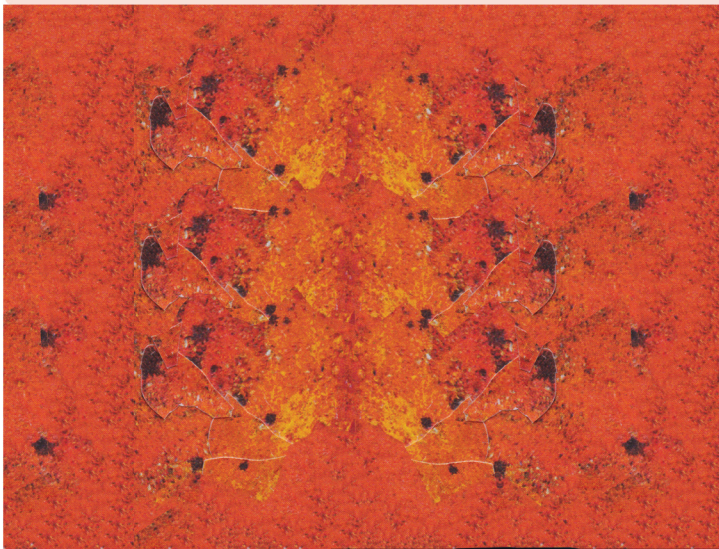


# Collage a Banded Burying Beetle



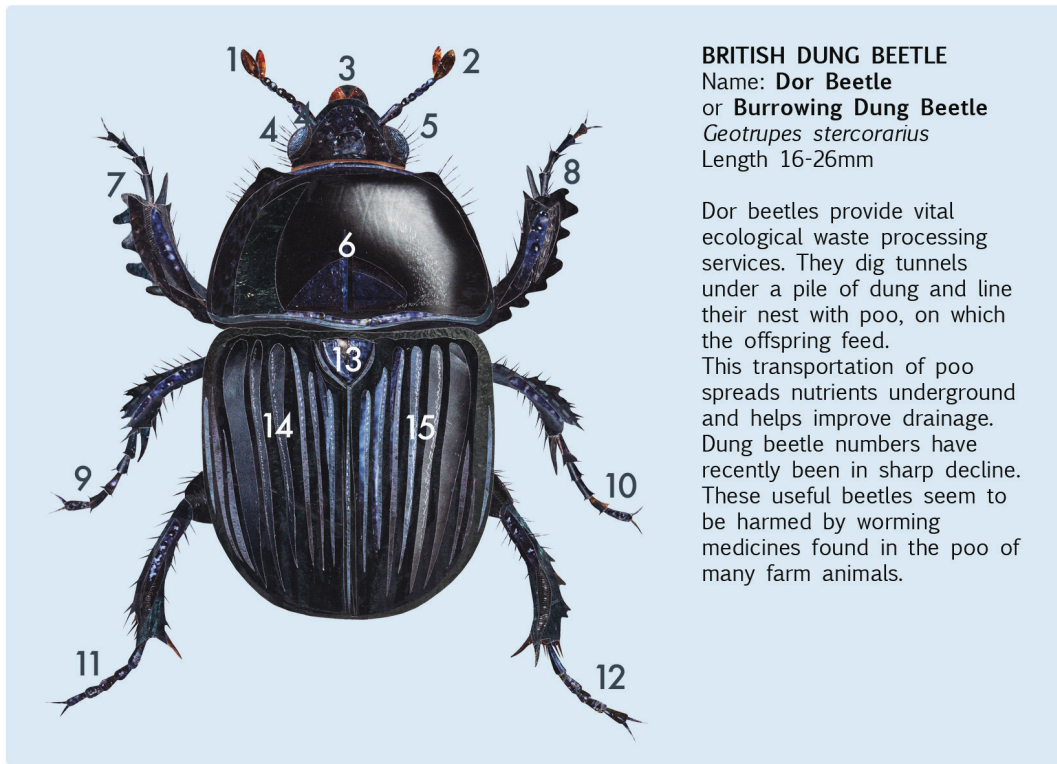
**BRITISH BEETLE**  
Name: **Banded Burying Beetle**  
or *Nicrophorus investigator*  
Length 8-12mm

This sexton beetle helps to recycle dead animal matter. The male and female beetles work as a pair, burying small, dead animals and feeding the rotting flesh to their babies. It is very unusual for both male and female beetles to care for their offspring, so the Banded Burying Beetle is a remarkably caring parent.



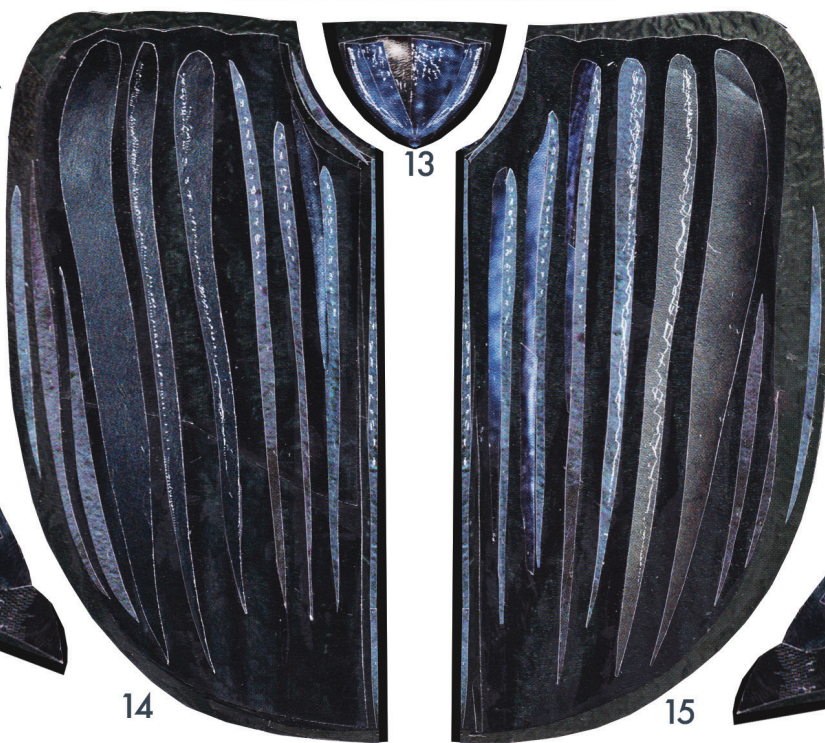
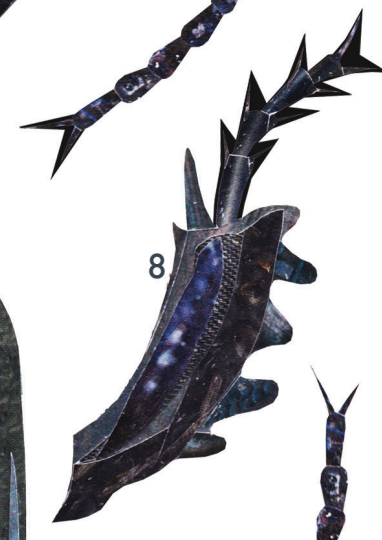
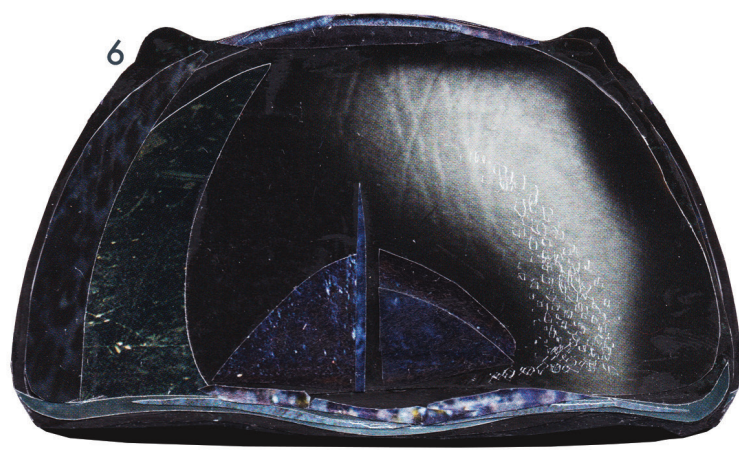
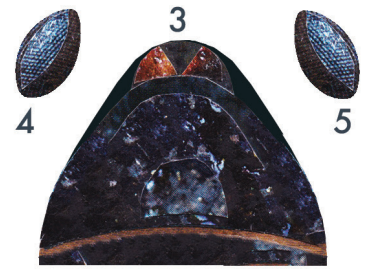


# Collage a Dor Beetle



**BRITISH DUNG BEETLE**  
 Name: **Dor Beetle**  
 or **Burrowing Dung Beetle**  
*Geotrupes stercorarius*  
 Length 16-26mm

Dor beetles provide vital ecological waste processing services. They dig tunnels under a pile of dung and line their nest with poo, on which the offspring feed. This transportation of poo spreads nutrients underground and helps improve drainage. Dung beetle numbers have recently been in sharp decline. These useful beetles seem to be harmed by worming medicines found in the poo of many farm animals.



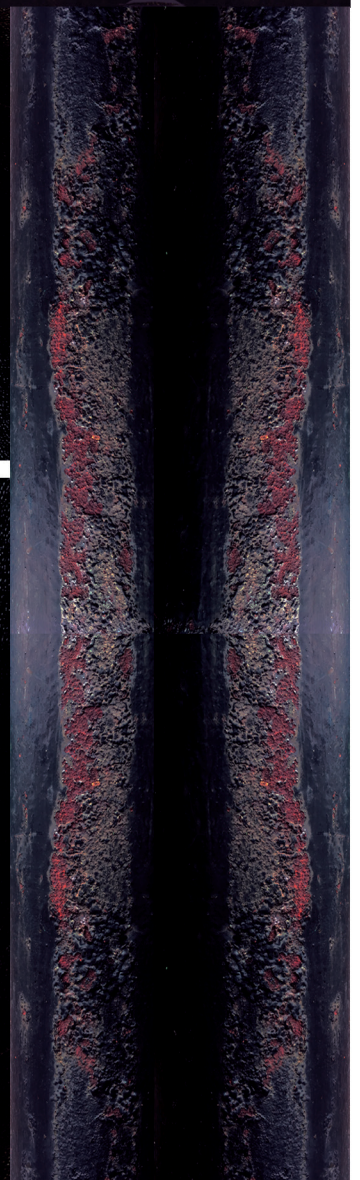
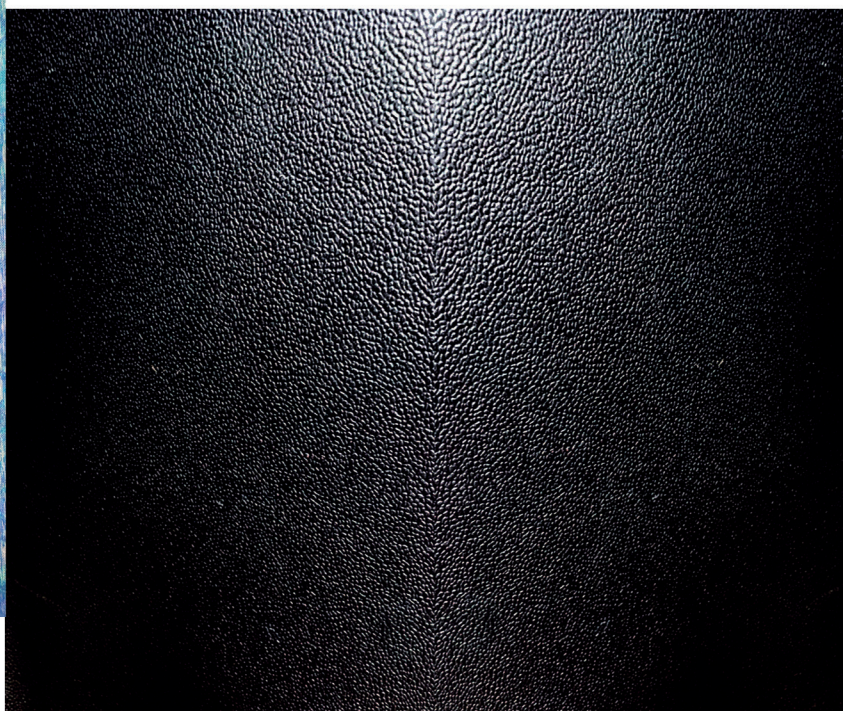
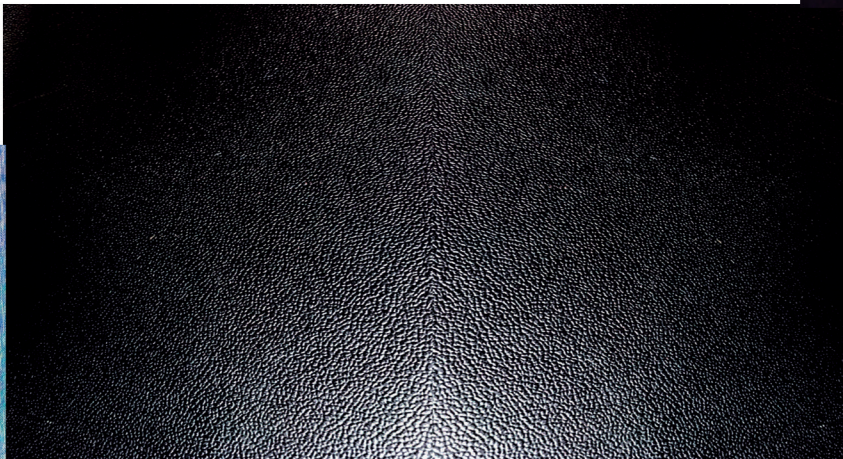
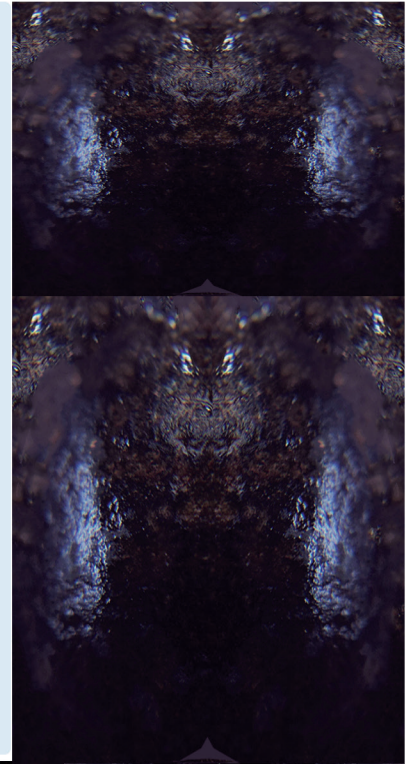


# Collage a Dor Beetle



**BRITISH DUNG BEETLE**  
Name: **Dor Beetle**  
or **Burrowing Dung Beetle**  
*Geotrupes stercorarius*  
Length 16-26mm

Dor beetles provide vital ecological waste processing services. They dig tunnels under a pile of dung and line their nest with poo, on which the offspring feed. This transportation of poo spreads nutrients underground and helps improve drainage. Dung beetle numbers have recently been in sharp decline. These useful beetles seem to be harmed by worming medicines found in the poo of many farm animals.



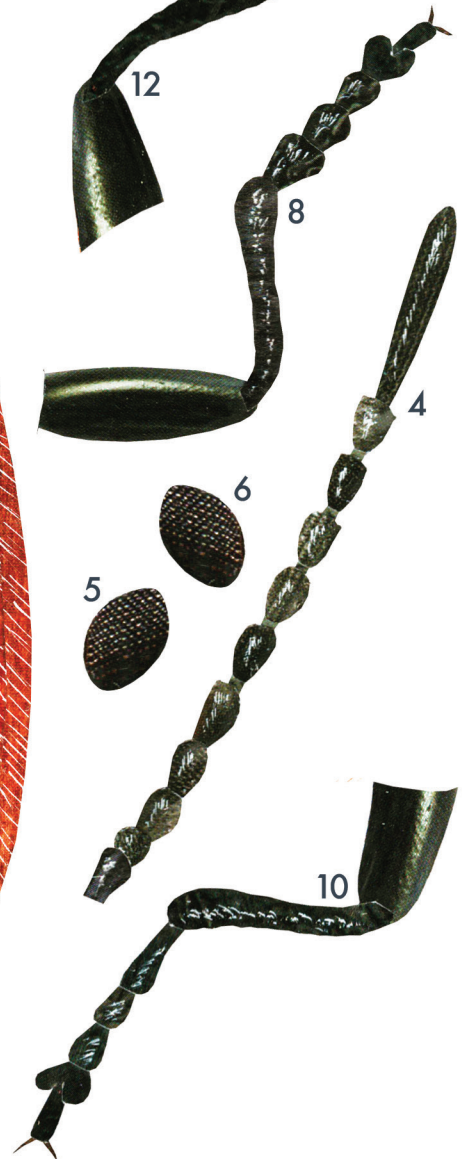
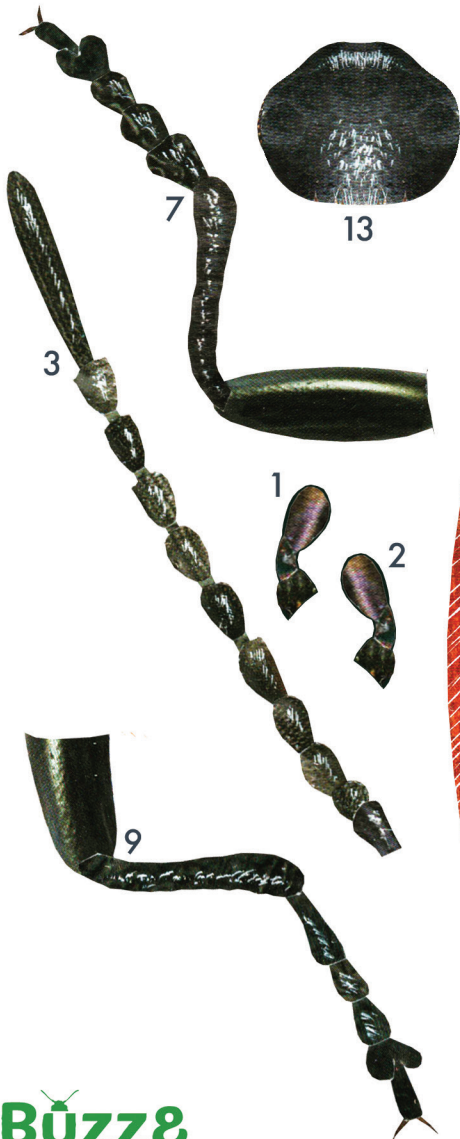
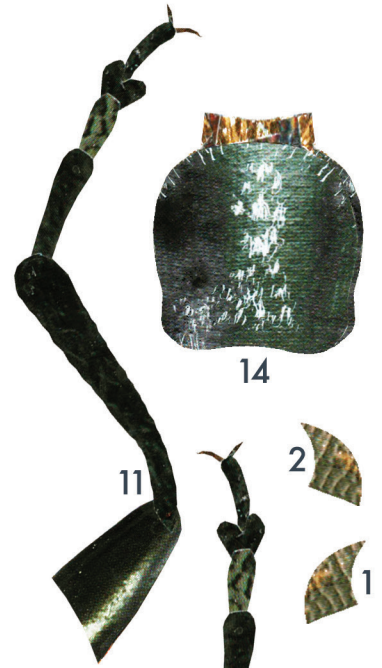
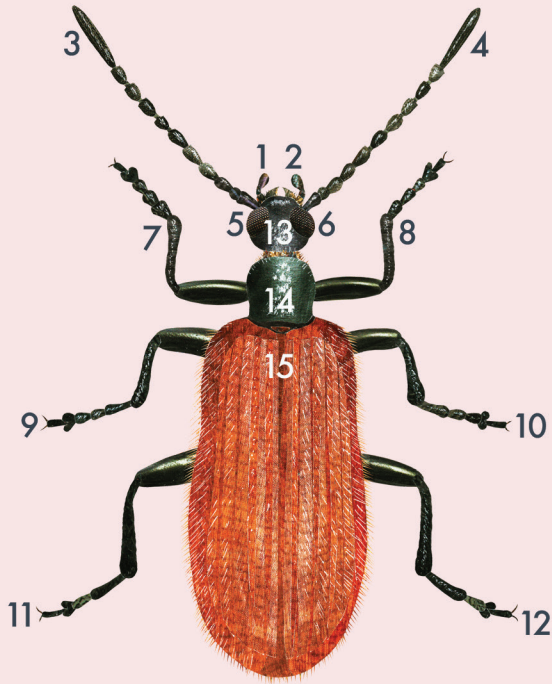


# Collage a Darkling Beetle

## BRITISH BEETLE

Name: **Darkling Beetle**  
or *Lagria hirta*  
length 7-8mm

This unusually hairy brown beetle is mostly spotted in habitats with light or sandy soils from May to August. The adult beetles feed on nectar and pollen from open structured flowers such as daisies and Wild Carrot, whilst the larvae chomp through decaying plant material in leaf litter, acting as one of nature's waste disposal and composting experts.





# Collage a Darkling Beetle



## BRITISH BEETLE

Name: **Darkling Beetle**  
or *Lagria hirta*  
length 7-8mm

This unusually hairy brown beetle is mostly spotted in habitats with light or sandy soils from May to August. The adult beetles feed on nectar and pollen from open structured flowers such as daisies and Wild Carrot, whilst the larvae chomp through decaying plant material in leaf litter, acting as one of nature's waste disposal and composting experts.

