



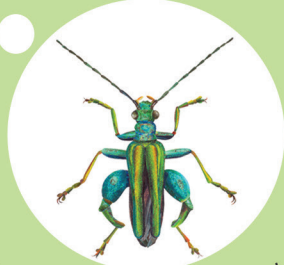
# Invertebrate Identification Workshop

Activity Sheets

# Wildlife to spot in long grass

All these creatures are found in long grass habitat, either fluttering through the air, feeding from flowers, nibbling on leaves and stems or scuttling along the ground.

Be careful not to harm any creatures when hunting in this habitat.



Thick-legged Flower Beetle  
length 5-8mm



Black Ant  
length 3-5mm



Red & Black Froghopper  
length 9-11mm



Small Tortoiseshell Butterfly  
wing span 50-56mm



Common Froghopper  
length 20-29mm



Dark-edged Bee-fly  
length 10-18mm



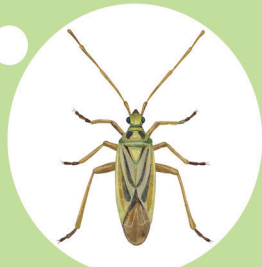
Dock Bug  
length 13-15mm



Garden Snail  
size 25-40mm



22-spot Ladybird  
length 3-5mm



Timothy Grass Bug  
length 6-7mm



Meadow Grasshopper  
length 10-23mm



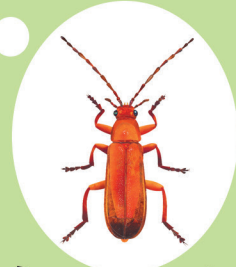
Earwig  
10-15mm



Large White Butterfly  
wing span 63-70mm



Red Admiral Butterfly  
wing span 67-72mm



Red Soldier Beetle  
length 7-10mm



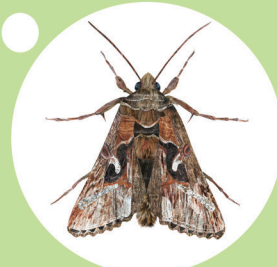
Crane Fly  
length 40-60mm



Batman Hoverfly  
length 7-12mm



Buff-tailed Bumblebee  
length 10-25mm



Silver-Y Moth  
wing span 32-52mm



Peacock Butterfly  
wing span 50-56mm



24-spot Ladybird  
length 3-4mm

# Wildlife to spot in woodland

All these creatures are found in woodland habitat, either fluttering through the air, feeding from flowers, burrowing through leaf litter or hiding under logs and stones.

Be careful not to harm any creatures when turning logs and rocks to look underneath.



7-spot Ladybird  
length 5-8mm



Snake Millipede  
length 20-29mm



Black Ant  
length 3-5mm



Garden Snail  
length 25-40mm



Centipede  
length 20-30mm



Common Banded Hoverfly  
length 8-13mm



Devil's Coach Horse  
length 23-32mm



Harvestman  
leg span 18-25mm



Lesser Stag Beetle  
length 20-40mm



Striped Woodlouse  
length 8-11mm



Pill Woodlouse  
length 15-18mm



Rough Woodlouse  
15-20mm



Earthworm  
length 15-150mm



Speckled Wood Butterfly  
wingspan 47-50mm



Green Lacewing  
length 10-18mm



Red-legged Shieldbug  
length 10-15mm



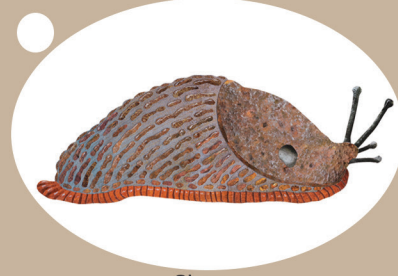
Batman Hoverfly  
length 7-12mm



Garden Spider  
length 8-18mm



Black Clock Beetle  
length 23-32mm



Slug  
size 20-80mm



Earwig  
length 10-15mm

# Invertebrate Guide

0 Legs



Snail



Slug



Worm

6 Legs

Insects



Ant



Bug



Wasp



Beetle



Fly



Bee



Earwig



Cricket/Grasshopper



Moth



Dragonfly



Damselfly



Butterfly

8 Legs

Arachnids



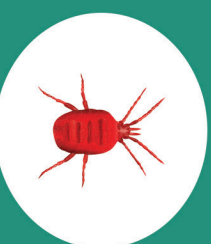
Spider



Spider



Tick



Mite

14 Legs



Woodlouse



Pill Woodlouse



Centipede



Millipede

Look how many different invertebrate species are found in Britain.

Snails: approx. 120	Damselflies: 21
Slugs: 46	Dragonflies: 36
Worms: 27	Crickets: 23
Ants: 61	Grasshoppers: 11
Bugs: Approx. 2000	Spiders: approx. 650
Wasps: over 7000	Harvestmen: approx. 25
Beetles: over 4200	Ticks: 20
Flies: approx. 7000	Mites: approx. 300
Bees: approx. 270	Woodlice: 65
Earwigs: 7	Centipedes: 61
Moths: over 2500	Millipedes: 83
Butterflies: 59	